



GMT MONTHLY MEMBERSHIP PROGRESS REPORT

Results as of: 5/31/2018

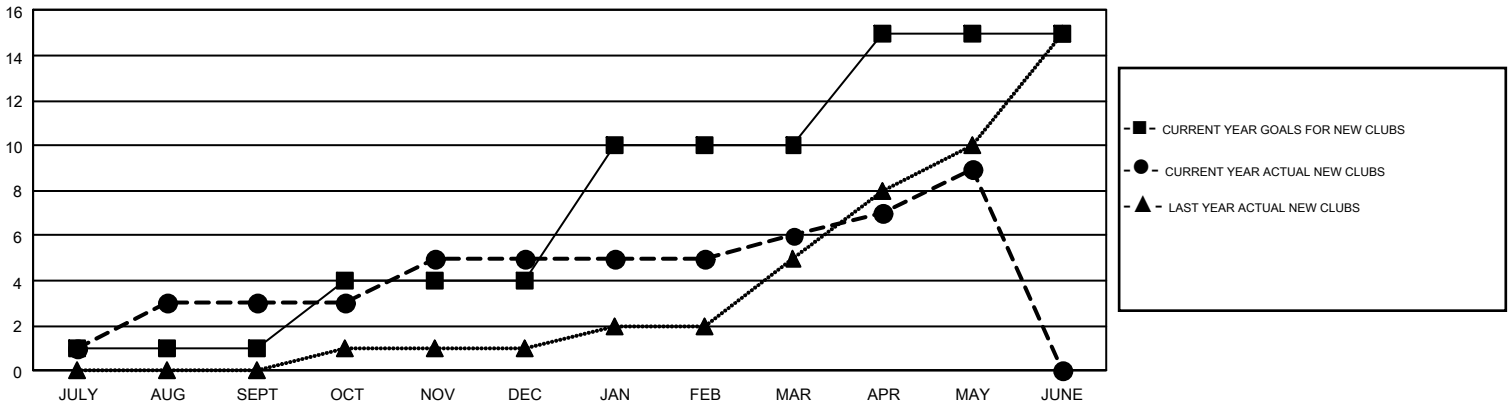
GMT Constitutional Area 4, Group C

GMT: MIKLOS HORVATH

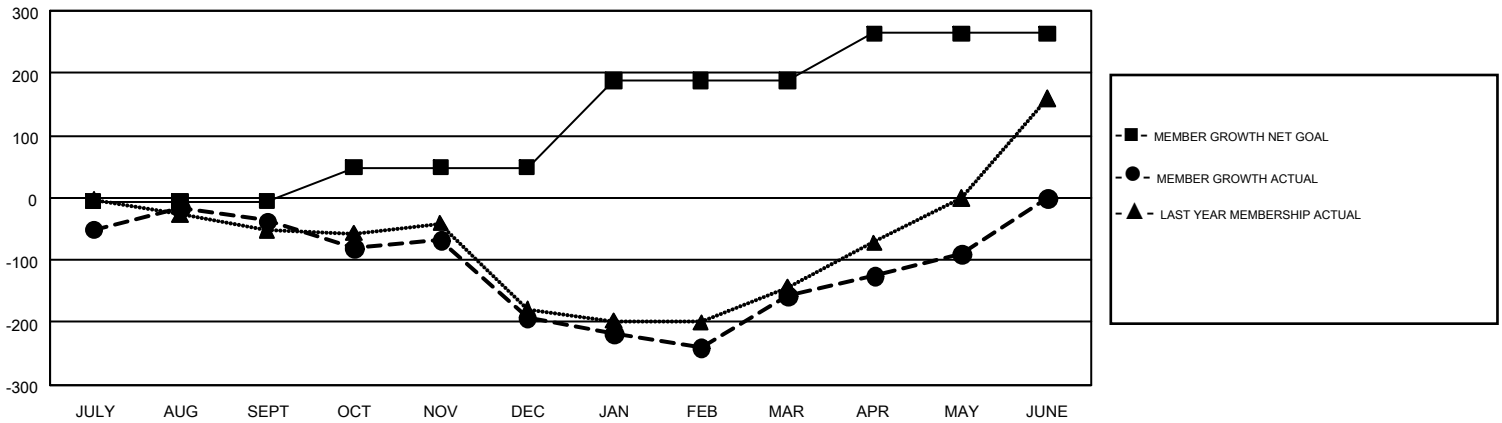
REPORT DOES NOT INCLUDE CLUBS IN UNDISTRICTED AREAS.

Clubs				Members			
RESULTS FOR 2017-2018				RESULTS FOR 2017-2018			
QUARTER	NEW CLUB GOAL	NEW CLUBS	DROPPED CLUBS	QUARTER	MEMBER GROWTH NET GOAL	MEMBER GROWTH ACTUAL	DROPPED MEMBERS ACTUAL (including transfers)
JULY/AUG/SEPT	1	3	2	JULY/AUG/SEPT	-6	155	185
OCT/NOV/DEC	3	2	4	OCT/NOV/DEC	55	131	281
JAN/FEB/MAR	6	1	2	JAN/FEB/MAR	139	218	170
APR/MAY/JUNE	5	3	0	APR/MAY/JUNE	76	239	171

GOALS AND ACTUAL NEW CLUBS CUMULATIVE



GOALS AND ACTUAL MEMBERS CUMULATIVE



DROPPED CLUBS: 8	184 CLUBS OF 426 ADDED 1 OR MORE NEW MEMBERS	GENDER DISTRIBUTION MALE 5,144 (59.85%) FEMALE 3,451 (40.15%)
DROPPED MEMBERS DECEASED 24 CLUB CANCELLED 71 OTHER 711 <hr/> TOTAL 806	CLICK HERE FOR CUMULATIVE MEMBERSHIP DATA	TOTAL FAMILY UNIT MEMBERS 674 FAMILY MEMBERS PAYING HALF DUES 347